

The Wheelchair User's Guide to
Accessible Countryside Sites and Trails in
Shropshire
and the Borderlands



Shropshire
County Council



2006/07

The research and development of this guide has been supported by:



Disabled Holiday Information

The production of the guide has been funded by:

The Countryside Agency
Shropshire County Council, Countryside Access Team



The Countryside Code

- Be safe – plan ahead and follow any signs
- Leave gates and property as you find them
- Protect plants and animals, and take your litter home
- Keep dogs under close control

Please note -

If you can read this, but know someone who can't. Please contact us on 01743 255061, so that we can provide this information in a more suitable format such as large print braille and audio or translate into another language.

Introduction



Welcome to the wealth of Shropshire's Countryside. This guide contains details of various sites and trails covering the Shropshire Hills, the Shropshire plains, Oswestry Uplands and mid-Severn Areas and beyond which can be used with wheelchairs, pushchairs and by people with disabilities. We hope you enjoy your time in our beautiful and varied landscape.

This brochure has been researched and compiled by Shropshire County Council Countryside Access Team and Frank and Sue Napper whose expertise and experience have been invaluable. In all cases Frank (a wheelchair user) and Sue have visited the locations listed within the guide to ensure that the information is accurate for someone in an average sized wheelchair. This brochure is not designed to give a comprehensive guide to each area but to give a taste of what can be seen and done. It is important to note that there will be other accessible places that were not visited.

This guide will also assist others who experience difficulties in accessing the countryside.

The guide is split into local district/borough areas within the county and several sites outside Shropshire. At the beginning of each section is a reference to the relevant Ordnance Survey Explorer map.

Each entry includes the abbreviations of the responsible organisation, details can be found on page 21.

The Earth Centre (EC), Derwen College for the Disabled, Gobowen (Tel 01691 661234)

Forestry Commission (FC Wales), Victoria House, Victoria Terrace, Aberystwyth, Ceredigion, SY23 2DQ.
Tel: 0845 604 0845.

Wrexham Borough Council (WBC), The Guildhall, Wrexham, LL11 1AY. Tel: 01978 292000.

Denbighshire County Council (DCC), County Hall, Wynnstay Road, Ruthin, LL15 1YN. Tel: 01824 706000.

Cheshire County Council (CCC), County Hall, Chester, Cheshire, CH1 1SF. Tel: 01244 602424.

Disabled Holiday Information, PO Box 186, Oswestry, Shropshire, SY10 1AF. Email: info@disabledholidayinfo.org.uk

Useful websites:

www.shropshire.gov.uk

www.telford.gov.uk

www.disabledholidayinfo.org.uk

www.severngorge.org.uk

www.shropshiretourism.info

www.shropshirewildlifetrust.org.uk

www.visitshrewsbury.com

www.stwater.co.uk

www.forestry.gov.uk

www.english-nature.org.uk

www.virtual-shropshire.co.uk

www.nationaltrust.org.uk

www.shrewsbury.gov.uk

www.forestry.gov.uk

www.oswestrybc.gov.uk

www.wrexham.gov.uk

www.northshropshiredc.gov.uk

www.denbighshire.gov.uk

www.bridgnorth-dc.gov.uk

www.cheshire.gov.uk

Useful Contacts

Shropshire County Council (SCC), Countryside Access Team, Community Services, Shirehall, Abbey Foregate, Shrewsbury, SY2 6ND. Tel: 0845 678 9000.

Shrewsbury and Atcham Borough Council (SABC), Countryside Officer, The Guildhall, Frankwell Quay, Shrewsbury, SY3 8HQ. Tel: 01743 281000.

Oswestry Borough Council (OBC), Castle View, Oswestry, Shropshire, SY11 1JR. Tel: 01691 671111.

North Shropshire District Council (NSDC), Edinburgh House, New Street, Wem, SY4 5DB. Tel: 01939 232771.

Bridgnorth District Council (BDC), Westgate, Bridgnorth, Shropshire, WV16 5AA. Tel: 01746 713100.

Telford & Wrekin Council (T&W), Civic Offices, Telford, TF3 4LD. Tel: 01952 202100.

Severn Gorge Countryside Trust (SGCT), Wesley Rooms Annexe, Jockey Bank, Ironbridge, Telford, TF8 7PD. Tel: 01952 433880.

Shropshire Wildlife Trust (SWT) 193 Abbey Foregate, Shrewsbury, SY2 6AH. Tel: 01743 284280.

English Nature (EN), Attingham Park, Shrewsbury, Shropshire, SY4 4TP. Tel: 01743 282000.

National Trust (NT), Attingham Park, Shrewsbury, Shropshire, SY4 4TP. Tel: 01743 708100.

Forestry Commission (FC), West Midlands Forest District, Lady Hill, Birches Valley, Rugeley, Staffs, WS15 2UQ. Tel: 01889 586593.



© Crown Copyright. All rights reserved.
Shropshire County Council, 100019801, 2006.

Each site or trail has been given a category which indicates its ease of use in a wheelchair (or with a pushchair).

Category 1 – These are easy access routes suitable for wheelchair users (if able) without assistance.

Category 2 – These are moderately easy routes suitable for wheelchair users with light assistance.

Category 3 – These routes have fairly steep gradients or rougher surfaces and are suitable for wheelchair users with assistance from someone who is fit and able.

A list of the key contacts and site managers/owners are detailed at the back of the brochure.

For further information on other guides or to obtain a downloadable version of this particular brochure visit:-

www.shropshire.gov.uk or
www.disabledholidayinfo.org.uk

We have made every effort to ensure that the information contained in this guide was correct at the time of printing. Neither Shropshire County Council nor Disabled Holiday Information will be held liable for any loss or disappointment suffered as a result of using this guide.

Shrewsbury and the surrounding area

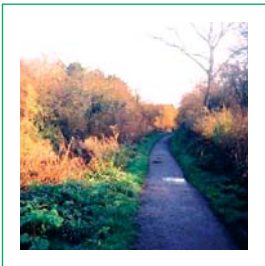
Explorer 241 Shrewsbury



Monkmoor Pool (STW/SWT) This is a wetland reserve which lies in the meander of the River Severn next to the Shrewsbury Bypass. The large settlement lagoon provides good opportunities for bird watching. Watch out for snipe, kingfishers and the skulking water rail. There is a short, reasonably-surfaced path leading to a wheelchair accessible bird hide. Visitors need to obtain a key from the Shropshire Wildlife Trust, 193 Abbey Foregate, Shrewsbury. Telephone 01743 284280. Parking is available on the track by the hide entrance. **Category 1.**

Merrington Green, Bomere Heath (SWT/SABC)

This is an ancient common where areas of grassland have been reopened to encourage a range of flora and fauna. There is a short circular easy access route with a good, hard surfaced path giving access to a restored pond where you can see dragonflies and damselflies. There is a large car park which has a reasonably good surface (no designated disabled spaces). There is also a 2m height restriction at the entrance. This path is fairly level and suitable for all abilities. **Category 1.**



Old Shrewsbury Canal (SABC) The Shrewsbury Canal was 17 miles long and was the main way of transporting goods in tug boats to and from Shrewsbury. Goods included bricks, pig iron, fruit, glass, coffee and even gunpowder! The canal continued to survive into the 20th Century although in a rundown state. Much of the canal no longer exists, however, the line of the canal now forms part of a cycle track. This pathway runs from Ditherington to Uffington and has a good hard surface and is fairly level. Some assistance may be needed



Delamere Forest (FE) There is a Visitor Centre off the B5152 signposted by Delamere Station. There is a disabled toilet, car park with designated spaces and a café. The trails around the centre are too rough and steep for wheelchair users but there is an accessible circular trail from Barnsbridge car park. From the centre turn left up to the first crossroads and turn left again, the car park is approximately half a mile along the road on the left-hand side. Having parked, take the path to the right-hand side of the car park entrance (when facing out to the road). The trail has a reasonably surfaced path and passes through pleasant woodland. **Category 3.**

Herefordshire

Queenswood Arboretum and Country Park There are excellent hard surfaced pathways through the park and a motorised scooter is available for hire should you need it Telephone 01586 797052. There is an information centre, a café, car park and disabled toilets. **Category 2.**



are several steep slopes to negotiate on the way down to the two accessible picnic tables at the end of the trail. Enjoy pleasant riverside views on this trail. **Category 3.**

Bwlch Nant Yr Arian Visitor Centre (FE Wales).

This centre is approximately 10 miles east of Aberystwyth on the A44 and red kite are fed daily here. There is a new state-of-the-art 'green' visitor centre complete with a café, shop and a disabled toilet. An accessible trail takes you right round the lake where you can discover fascinating facts about red kites. Why not have lunch on the wheelchair-friendly lakeside picnic bench?

Category 3.

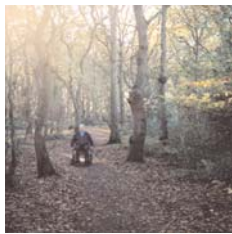
Loggerheads Country Park (Denbighshire CC)

The Park is situated at Loggerheads on the A494 Mold to Ruthin Road. There is a car park with designated spaces, a visitor centre, a café and disabled toilets. If you go down to the centre and past the café over a stone bridge and take the left-hand path signposted 'The Leete', there is an accessible linear trail. It has a good surfaced path, muddy in places (in wet weather) that follows alongside the river. Further along the path the surface becomes rougher but is still accessible to where the trail divides. **Category 3.**



Cheshire

Stanney Woods (CCC) The woods are situated at Whitby on the northern outskirts of Chester. There is a small car park and access to the woods at the present time is via a low barrier (which means you have to duck under it) or a motorcycle barrier (which is narrow and may not allow larger wheelchairs through). Once inside there are three trails all varying in length with excellent all weather hard-surfaced paths. It is a pleasant, easily negotiated, level trail. **Category 1.**



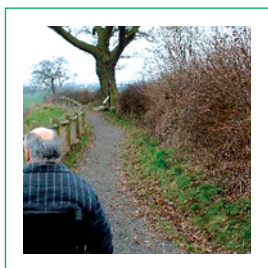
to negotiate the underpass at Telford Way. On-street parking is available at Lesley Owen Way (off Sundorne Road) approximately half way along the path, where there is access to the path down a short steep gradient. The route is suitable for all abilities. **Category 2.**

Battlefield Heritage Park (SCC) These two circular trails (The Hotspur Trail and The Royal Trail) take you around the famous Battlefield Heritage Park where on Saturday 21st of July 1403 a rebel army led by Sir Henry 'Hotspur' Percy fought with the Royal army of Henry IV. The battle that followed was to be remembered for its ferocity.

A specific leaflet is available from Visitor Information Centres or can be downloaded from the County Council website.

The site is accessed from the Battlefield Way roundabout just off the A49 where there is a car park with a good hard surface (no designated disabled spaces). A viewing mound is located to the north of the car park. However, the access path to the mound has loose gravel and therefore some assistance is necessary. The trails provide good circular routes around the perimeter of the site and if you take the path in an anticlockwise direction it is possible to avoid the steepest incline. Half way along the route a path gives access to St Mary Magdelene Church which was built in the 1400s to commemorate the battle. It is open at weekends from May to September. The path to the Church is good and level. However, once you enter the church grounds through a kissing gate, wheelchair users have to cross rough grass to get to the church entrance. **Category 2.**

Haughmond Hill (FC) In total there are three waymarked trails through attractive mixed woodland with the main species





of trees being Scots and Corsican pine. The car park has a good surface with two designated disabled spaces and is situated just off the B5062 Shrewsbury to Newport Road. Wheelchair users can access the picnic area from the car park but there are no wheelchair friendly tables. The all-ability trail, which is waymarked in yellow, runs for approximately three quarters of a mile and has a hard but rough surface. The trail runs through an area of old oak woodland and past two ponds. There are benches at intervals throughout the trail.

Category 2.



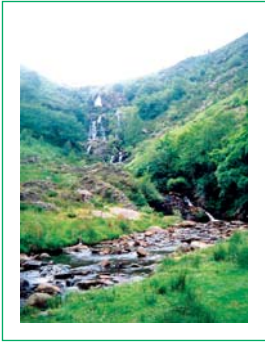
The Quarry Shrewsbury (SABC) This is a distinct part of Shrewsbury as it is centrally located and well used as an area to picnic, walk, relax and simply enjoy the views. There are several paths running throughout the park and alongside the River Severn. Situated in the park is the Dingle, a small lake and a sunken garden, that has beautiful displays of floral bedding in the spring and summer. For two days in August each year the famous Shrewsbury Flower Show is held here.

Category 2



Nesscliffe Countryside Heritage Site (SCC) The site comprises of two wooded hills Nesscliffe & Hopton and a heath covered ridge known as The Cliffe. These give expansive views over the Shropshire countryside and Welsh hills. The path opposite the Tree Pidgeons public house near Kynaston's cave is steep and has too rough a surface for wheelchair users as is the entrance from the car park half a mile along the lane.

However, if you continue for about a further quarter of a mile to Hopton and take the first right turn, there is a car park (Pine Car Park) approximately 180 m on the left at Hopton Hill. From here it is possible to wheel along a wide track (with assistance on the gradients) and the surface is reasonably good although can be muddy in places. **Category 3.**



right. There is a small car park at the end of the lane and the trail has good hard-surfaced paths. **Category 1.**

At the far end of the lake opposite the Bala Road is an accessible trail to the **Rhiwagor bird hide** on the edge of the lake. The surface of the path is soft and may be muddy in places. **Category 1.**

Pistyll-y-meinciau waterfall and picnic area can be reached by taking a forest trail off to the left of the Bala Road just over the other side of the bridge. This trail leads on to a track along the river valley up to the waterfall. The scenery is superb and well worth the considerable effort to negotiate the steep gradients. However, it is not for the fainthearted and the pusher will need to be exceptionally fit. **Category 3.**



Alyn Waters Country Park (WBC) The park is situated in the Alyn Valley, three miles from the town centre of Wrexham on the A451 Mold Road. There is a wheelchair-friendly sculpture trail around the park with a good all weather surface but you may need assistance in certain areas due to the gradient. The newly extended visitor centre has a disabled toilet and refreshment and rest room facilities. A cycle path has been upgraded and especially adapted bicycles and tricycles suitable for people with disabilities (and their carers) are available. Further details are available by telephoning 01978 363555.

Category 2.



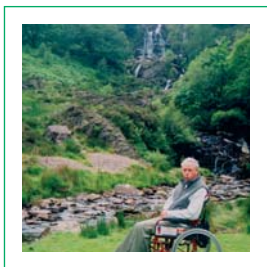
Pont Llogel (FE Wales) This is part of the Dyfnant Forest on the B4395 approximately eight miles from Lake Vyrnwy. The car park has a reasonable surface with an accessible picnic bench. The linear trail follows the course of the Afon Efyrynwy for approximately half a mile. The hard surface is strewn with large coarse gravel which can be awkward to wheel on. There

and then goes up a long gradient. Assistance will be needed to reach as far as possible. The path then comes to a section that is not negotiable with a wheelchair so users will have to retrace the route. **Category 3.**



Severn Valley Way, Ironbridge (SGCT) The entrance to the track (Benthall Railway track) is not very wheelchair friendly but it is possible to wheel between the iron posts at the side where there is less of a step. The track is rough and muddy in places but level and is possible to wheel along as far as the power station cooling towers. The path goes up a steep incline from here and is not suitable, so for wheelchair users this is a reasonable length linear trail. Some assistance may be needed to avoid the potholes that appear in places and over the rougher bits. The car park is by the Visitor Information Centre at Ironbridge and has free designated disabled parking spaces. The closest disabled toilet is over the bridge (several kerbs to negotiate and an incline) about 50 yards on the right. **Category 2.**

The Borderlands, Wales



Lake Vyrnwy Nature Reserve (STW) Lake Vyrnwy Nature Reserve is set in a beautiful part of Mid Wales, in the heart of the Berwyn Mountains where Powys meets north east Wales. Lake Vyrnwy was created in 1888 when work on a dam to supply water to Liverpool was finally completed. The old village of Llanwddyn disappeared under the waters but when the level drops during dry summers, you can see the ruins of the buildings. The reserve is managed by the RSPB in partnership with Severn Trent Water. At the bottom of the dam is a sculpture trail. To reach it from the Visitor Centre cross the dam and turn right and take the next lane on the

Beck's Field (SABC) this is a steep river terrace of grassland and woodland, complementing the Quarry (gardens) on the opposite side of the river. Access is via a kissing gate that is difficult to negotiate due to clearance. It is possible to wheel along a good surface as far as the first bicycle barrier, although there is a steep gradient down to the first boathouse and a cobbled surface in front of the school boathouse. There is parking on Porthill Road in a lay-by opposite the entrance (no designated disabled spaces). **Category 3.**

Oswestry and District

Explorer 240 Oswestry



The Earth Centre (EC) The Earth Centre is located in the grounds of Derwen College just off the main A5 near the Orthopaedic Hospital at Gobowen. There is a 750 metre trail around the four year old arboretum of indigenous trees. It is a level site with good paths and plenty of benches and has been designed with wheelchair accessibility in mind. There are also examples of different habitats - a pond, an accessible bird hide and insect attracting areas. Admission to the centre is free and it is open on weekdays from 9am to 4pm during college term times (excepting staff holidays). There is a disabled toilet and designated parking spaces as well as other attractions including a tearoom. **Category 1.**

Broadlands Way Recreation Ground (OBC) There is limited on-street parking in Broadlands Way. The short path that runs through the recreation ground is well surfaced and suitable for wheelchairs. If you live nearby, then the site is well worth visiting. **Category 1.**

Ifton Meadows Nature Reserve, Glyn Morlas

(OBC) There is a small surfaced car parking area at the entrance. The site is entered through a gate on to a new hard surfaced road that runs for approximately 135m. Due to the old mine workings the rest of the site is either rough or boggy and steep and is, therefore, unsuitable for wheelchairs. Again worth a visit if you live locally. **Category 1.**



Llanymynech Heritage Area (SCC) This is a nationally significant industrial heritage area forming part of the limework landscape and including one of only three remaining Hoffman Kilns in the country. Part of the Hoffman Hike (two walks through this area) is accessible for wheelchair users. Leaflets are available from Oswestry Visitor Information Centre or can be downloaded from the County Council website. Take the canal towpath at the Heritage Centre to point 10 on the information leaflet and then turn left up towards point 9 then right down to point 12. From here the route is not wheelchair accessible so the route has to be retraced. There is a visitor centre but the area around it is on a camber and has a rough surface and there are cobbles within the centre of the floor. **Category 3.**

The North Shropshire Area

Explorer 243 Market Drayton, **Explorer 257** Crewe and Nantwich



The Mere, Ellesmere (SCC) The Mere at Ellesmere is the largest of the Shropshire meres. It is an important area for wildlife and attracts many different water birds. As well as the Mere there are gardens, a picnic area, refreshment outlets and toilets. On-street parking has designated disabled areas. The path around the Mere has a good surface and is level and suitable for all abilities. The path has recently been extended to

The Pool, Coalbrookdale (T&W) There is on-street parking or the Museum of Iron car park (with a disabled toilet) is nearby. There is a newly laid accessible path around the pool with a ramped entrance and an accessible bridge. At the far end of the pool is the stream that feeds it and the path that follows it is accessible for a reasonable distance including the first boardwalk. There are benches by the poolside but no wheelchair accessible picnic tables. **Category 2.**

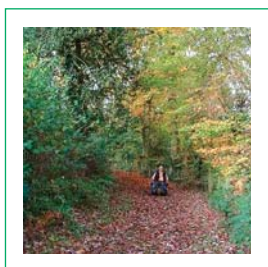


Castle Pools (T&W) Apley Pool can be reached by going through the opening on the left-hand side of the Apley Castle car park, by the old ice house. This path goes down a gradient and narrows as it reaches the pool so assistance would be needed to negotiate it. It is possible, with difficulty, to go around three quarters of the pool perimeter. However, from here it crosses very uneven terrain so you are forced to retrace your route. **Category 3.**



Telford Town Park (T&W) The park has 170 hectares of open space. There is much to explore from play areas to landscaped gardens and from grassy banks to pools and woodlands. The main car park has designated disabled spaces near the ice rink. Most of the paths throughout the park have good hard surfaces suitable for wheelchairs but some of them have long steep gradients that may require able assistance.

Category 3.

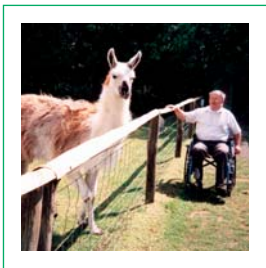


Ropewalk Meadow, Coalbrookdale (SGCT) This small but spectacular field at upper Coalbrookdale is home to a wealth of flowering plants, including numerous common spotted orchids. A key can be obtained from the Severn Gorge Countryside Trust Telephone 01952 433880 which allows entry onto the site in a wheelchair. The path has a rough hard surface and is grass covered in places. It follows the meadow



Dale End Park (T&W). This is situated in the valley of the River Severn at Ironbridge and has a large formal bedding and wildflower area, ornamental shrub beds, football pitches, play area and a grassed informal recreation area. The car park has designated spaces and has a good hard surface. If you approach the park from the river end of the car park there is a long, level well-surfaced path that follows the course of the river. However, the plentiful supply of picnic benches are not accessible for wheelchairs and are set back from the path in grass.

Category 1. Near the town end is an area of pleasure gardens also with hard-surfaced paths. However, if you exit from the town side there is a steep slope to negotiate. **Category 3.**



Hoo Farm (T&W) This is a childrens farm activity and learning centre with play areas, access to the animals and various walks. There is a gravelled car park with designated disabled parking spaces. Having paid the entrance fee for Hoo Farm and negotiated the coarsely gravelled surfaces near the entrance, there are woodland walks through the grounds. These have reasonably surfaced paths that it is possible to wheel along.

Category 2.



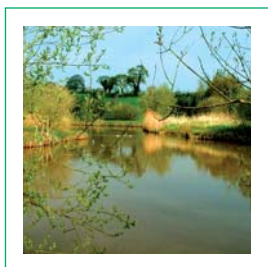
Albrighton Moat (T&W) This is a purpose built facility on the site of a Scheduled Ancient Monument situated midway between Wolverhampton and Telford. The gardens are divided into 35 themes that include a sensory garden containing an abundance of scented plants and aromatic herbs; water features creating interesting noise elements; a nature trail harbouring a wealth of wild flowers, birds, butterflies and small mammals as well as picnic areas. For bird-watchers moorhens, herons and kingfishers are among the regular visitors. There is excellent wheelchair access throughout the site and good facilities within the centre. Fishing and wheelchair hire are available but need to be pre-booked. Tel: 01902 372441. **Category 2.**

the Mere's edge and the stile has been replaced with a kissing gate. There is a wheelchair-accessible toilet near the playground and another disabled toilet is available just past the Boathouse Restaurant and Tearoom (RADAR key operated). **Category 1.**

Walkmill Meadows, Market Drayton (NSDC) This site provides access to Riverside Meadows and wetland. Disabled access is via the second turning left off Summerhill Gardens, where there is a small reasonably surfaced car park (no designated disabled spaces). The path follows the River Tern, the surface of which varies and is rough and muddy in places. It is mainly level throughout apart from the gradient at the start of the path. **Category 2.**



Whixhall Moss National Nature Reserve (EN) Whixall Moss forms part of a Site of Special Scientific Interest which straddles the English/Welsh border near Whitchurch. This area is of international importance for wildlife and the mosses are one of the most southerly lowland raised bogs in Britain. Disabled visitors are able to obtain a key for the gated disused railway line from the Manor House Office Telephone 01948 880362. Some of this route is suitable for usage in a wheelchair but it is rough and stony in places. The side tracks are rough and uneven and not really suitable even in dry weather. Although access is limited it does provide an opportunity to view this unique habitat. **Category 2.**



Wood Lane Nature Reserve (SWT) This is one of the best bird watching sites in Shropshire and has been developed on a disused industrial site. The site is made up of several large lagoons with islands and the surrounding grassland. The site is particularly well known for lapwing and winter migrants. There are two bird hides with wheelchair access. Access to the hides can be arranged by permit, from Shropshire Wildlife Trust



Telephone 01743 284280. The paths on the site are loose surfaced and fairly level. The bird hide by the car park is relatively easy to access but assistance will be needed if you wish to open the viewing window. The other hide is reached via a gate which will also require assistance to open when returning. Please note the path to this hide is uneven and the area in front of the entrance is covered with coarse gravel.

Category 3.

South Shropshire and District

Explorer 201 Knighton and Presteigne, **203** Ludlow, **216** Welshpool and Montgomery, **217** Longmynd and Wenlock Edge



The Stiperstones National Nature Reserve (EN)

This includes the major part of the Stiperstones ridge and is predominately steep, exposed and rugged moorland. Heather and whinberry (bilberry) are common throughout, and gorse is frequent on the lower slopes. The car park has designated disabled spaces and a good surface. There is a dedicated all-ability trail accessed through an easily negotiated gate. The surface of the trail is excellent and the audio units are easily used and extremely informative. There is a tapping rail and Braille instructions for those with visual impairment and there is plenty of seating. The trail itself, however, is only 500m in length. To obtain more information or a copy of the all-ability trail leaflet contact English Nature. **Category 1**

The Bog Visitors Centre (SCC) The Bog Visitors Centre is located within the Stiperstones National Nature Reserve just down the road from the all-ability trail detailed above. It was built as a primary school in 1839 to serve the Bog Village, which was demolished in 1972. It closed in 1968 when the children

to wheel a reasonable distance down in to the meadow. There are benches by the river although they are set in rough grass.

Category 1.

Wyre Forest Visitor & Discovery Centre (FC)

This is situated on the A456 just over the border into Worcestershire. The car park has several designated disabled spaces and the centre itself with a shop and café is accessible. There is a good disabled toilet to the rear of the centre. The all-ability accessible trail is waymarked with yellow posts and it is best approached in an anticlockwise direction to avoid the steepest inclines. There are plenty of benches along the route and one wheelchair accessible picnic table. The pathway winds through pleasant woodland and is approximately 1.4km long.

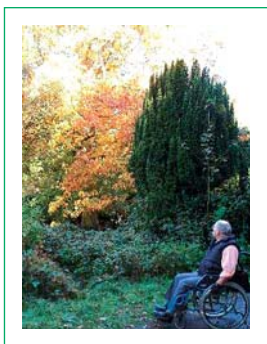
Category 3.

Wrekin

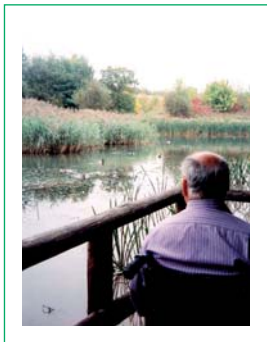
Explorer 242 Telford, Ironbridge and The Wrekin)

Apley Castle Park (T&W) Situated behind the Princess Royal Hospital, Leegomery lies Apley Castle Park just 2 miles north off junction 6 of the M54. The word Apley is Anglo-Saxon for a clearing in a forest where the apples grow, or in other words an orchard. The Park offers a habitat similar to that of a mature woodland. There is a small car park at the end of Apley Castle Lane (no designated disabled spaces). There is no gate, just an opening. If you take the right hand path from here it is possible to complete a level circular route on hard surfaced paths. The route is suitable for all abilities.

Category 1.



park is through a kissing gate which is difficult to negotiate in a wheelchair as there is very little clearance between the chair and the gate. The pathways are all level and the main ones have a good surface. If you take the left hand path there is a picnic site about a 90m on the left, however, the tables are located on rough grass and are not easily accessible for wheelchairs. There are benches located throughout the park for those who need to take rest breaks. It is possible to complete a good length circular route through pleasant woodland finishing near the RAF memorial, with the minimum of effort. There are also accessible paths across the other side of the road from the car park. This site is considered to be one of the best accessible sites in the county. **Category 1.**

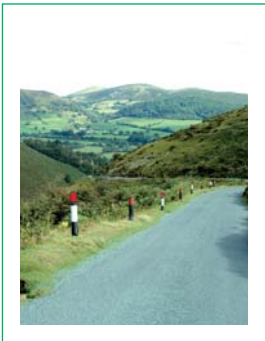


Severn Valley Country Park (BDC) This is a reclaimed mining area in Alveley and Highley on the River Severn. There is a large reasonably surfaced car park with one designated disabled space in front of the Visitor Centre. There is good access to the centre and a good, wheelchair-accessible toilet (RADAR key operated). The main path through the park has an excellent surface but has a very long steep incline when returning to the centre. It requires the assistance of a very fit and able pusher to negotiate it. **Category 3.**

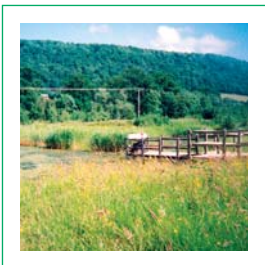
There is, however, a short easy access trail around the pond with a wheelchair accessible bird hide. Entrance is through a gate and the surface of the path is good and mainly level. It is situated on the left-hand side of the road as you exit. **Category 1.**

Well Meadow, Bridgnorth (BDC) There are designated disabled spaces at the car park in Severn Street and a RADAR key operated disabled toilet close by. There is also parking at the bottom of the street by the riverside. The linear path runs along the side of the river from here. Initially, it has a good hard surface but it deteriorates further along. However, it is possible

were relocated to a neighbouring school. It has since been used as a Field Centre for county primary schools. Recent improvements have been made to the site for people with disabilities which include dedicated disabled car parking facilities, improvements to the entrance lobby, upgrading the kitchen and providing new toilets within the Centre. The Centre is staffed by a team of volunteers who are drawn from the local community and they give a warm welcome to visitors, providing tea and wonderful home-made cakes as well as selling locally produced crafts. **Please note** due to the improvement work this site has not been visited **Category 2**.

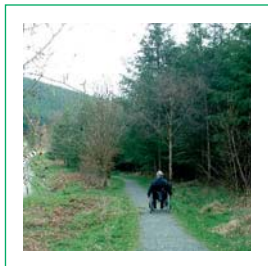


The Long Mynd and Cardingmill Valley (NT) This National Trust site provides access to an extensive and beautiful area of upland heath covered in heather. The Burway Road is the main access up on to the Long Mynd where there are various parking areas. The majority of these have uneven surfaces in places but it is possible with assistance to wheel across them and a short distance along the grass tracks to enjoy the fabulous views. It is also possible to park nearer the top and wheel part of the way along the road towards Ratlinghope where it is fairly level. The car parks in Cardingmill Valley itself have a reasonably good surface and you can wheel along the road to the accessible shop and café and the new disabled toilet. The routes leading out of Cardingmill are too rough and uneven for wheelchair users. **Category 2**.



Onny Meadows Country Park (SCC) Onny Meadows is part of the Shropshire Hills Discovery Centre at Craven Arms which is a primary tourist and education facility promoting the Shropshire Hills and the wider countryside. The meadow takes its name from the River Onny which runs along the boundary. There is a good, fairly level accessible trail alongside a pond

which includes a viewing platform. There is designated disabled parking within the car park and when the Centre is open there is a café and disabled toilet. **Category 2.**



Mortimer Forest, Nr Ludlow (FC) This is a large Forestry estate on the borders of Herefordshire and Shropshire. High Vinnalls car park has a reasonable surface and there are way marked routes including an all-ability trail. This starts from the car park and is marked with blue signposts. The surface of the trail is very good and follows a figure of eight for approximately one and a quarter miles. It should be noted, however, that there are some long gradients going both up and down that require a strong pusher or wheelchair user with extremely good upper body strength. Benches are provided along the route. **Category 3.**



Acton Scott Historic Working Farm (SCC) Acton Scott Historic Working Farm, as the name suggests, is a working museum which demonstrates life on an upland hill farm at the end of the 19th century. The museum is located in the Shropshire Hills, in the shadow of Wenlock Edge. It is set in a range of late 18th century buildings which formed the home farm of the Acton Scott estate. In recent years significant improvements have been made to existing pathways and new paths have been created opening up areas of the site previously inaccessible to wheelchairs e.g. the brick making and woodland craft areas, the bailiff's garden and the poolside walk. Wheelchair access to the café has also been improved. There are two locations on-site with toilets suitable for wheelchair users. The nature of the site means that one or two of the historic buildings are difficult to access and there are cobbled areas in the main farmyard. However, there are always members of staff on hand to help visitors. The museum has a number of robust wheelchairs that can be loaned free of



charge. Most demonstrations both in inside and in the open air are readily accessible to everyone.

There is a busy demonstration programme which varies according to the time of the year. Group discounts are available and special catering requirements can be met with advanced notice. Guided tours are available by arrangement.

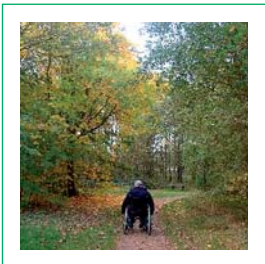
The Museums Service is happy to discuss visitors' needs in advance of a visit please telephone 01694 781306 or email acton.scott.museum@shropshire-cc.gov.uk. **Category 1.**

The Shropshire Hills Shuttles is a mini-bus service which runs at the weekends and Bank Holidays, during the spring and summer months. From 2006 the Shuttles are wheelchair accessible, but you do need to book your place in advance. The Secret Hills Shuttle enables you to explore the valleys and villages between Craven Arms , Clun and Bishop's Castle, while the Long Mynd and Stiperstones Shuttle departs from Church Stretton and takes you up into the hills. Please contact Transport for Everyone in South Shropshire on 01588 673888 or visit www.shropshirehillsshuttles.co.uk

Please note this service has not been visited.

Bridgnorth Area

Explorer 218 Wyre Forest and Kidderminster



Stanmore Countryside Heritage Site, Bridgnorth (SCC) Stanmore Countryside Heritage Site was once a RAF training camp. The reclaimed derelict land has since been planted with large amounts of trees which provide a valuable woodland setting with open grassy areas and developing scrub habitat. The site has a good sized, reasonably surfaced car park (no designated disabled parking spaces). The entrance to the